

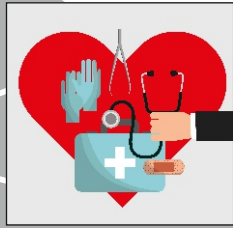
Intent:

Students will have the basic knowledge of the human body, how the human changes through the life span and how the health care services operate in the UK. They can articulate orally and in a written format the key concepts required.

HEALTH & SOCIAL CARE CURRICULUM

2021-2022

Balanced | Rigorous | Coherent | Vertically Integrated | Appropriate | Relevant



Self-concept

Life Changes

Life Choices

Growth, Health & Well-being



Health, Illness & Disease



Life Events



YEAR 11

Unit 3 (Course work) (Until Christmas)



Physical

Intellectual

Emotional



Growth & Development

Unit 1 (exam) From January



Social

Health & Well-being
Understand challenges facing society and individuals
Role & Professionals



What is happening in health

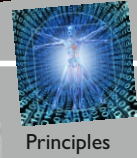
Health promotion activities



Unit 3 (Course work)

Research & Implement a health promotional activity

Research



Principles of care

Legislation

Individual needs

Services

Professionals

Sectors

Unit 2 (Course work)

Data

Research



Local knowledge

How To Research

National knowledge

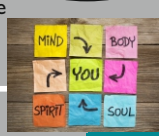
Regional knowledge



How To Write

identify, describe, explain, evaluate & analyse

know the difference between basic, detailed, accurate and comprehensive



YEAR 10

Communication



P.I.E.S



Types of care



Types of Care

Types of Service

Taster Lessons taught by P4L

Care settings



YEAR 9



Intent:
 Students will have the basic knowledge of the research into human behaviour linked to the social sphere, crime, development, psychological disorders and memory. They will gain an understanding of ethics, the rigor of research and the impact that psychology has on daily life in and out of school. They will learn, analyse, evaluate and critique learning that nothing can be taken at face value and every idea should be tested, accepted or rejected.

PSYCHOLOGY CURRICULUM

2021-2022

Balanced | Rigorous | Coherent | Vertically Integrated | Appropriate | Relevant

